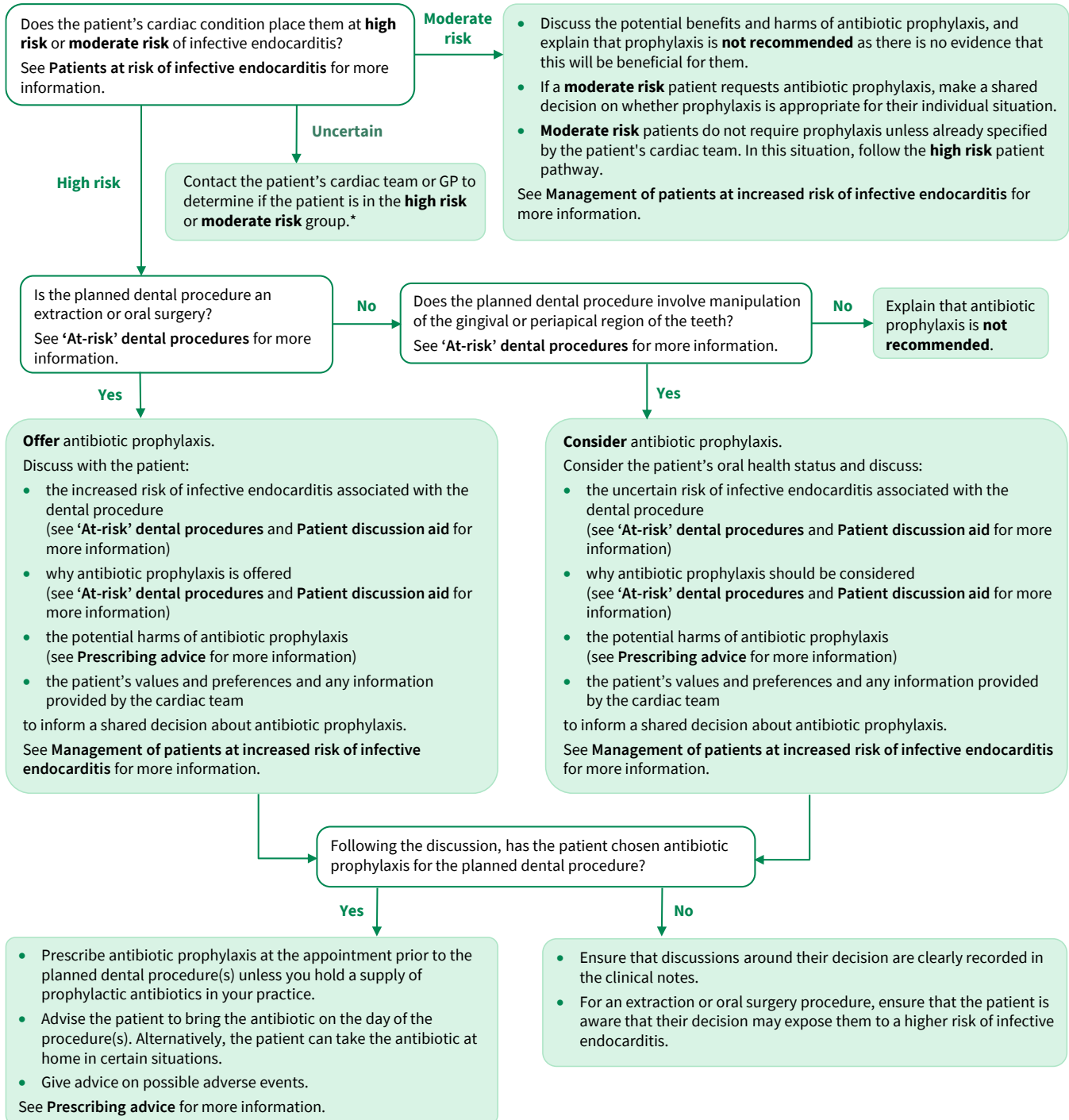


Management of patients at high and moderate risk of infective endocarditis



For all patients at **high** and **moderate** risk of infective endocarditis:

- ensure that they are aware of their risk of IE (see **Patients at risk of infective endocarditis** for more information)
- provide advice on prevention (see **Prevention of infective endocarditis** for more information)
- provide advice on symptoms that may indicate IE and when to seek expert advice (see **Patient discussion aid** for more information)
- ensure that any episodes of dental infection are investigated and treated promptly

*Emergency treatment

If the patient requires urgent dental treatment and you are unable to obtain the relevant information about prophylaxis from the patient or from their cardiac team/GP, assume that the patient has a high risk cardiac condition and make a shared decision on whether antibiotic prophylaxis is appropriate.

See **Management of emergency patients** for more information.